

GENUIS REMAPPING GUIDE

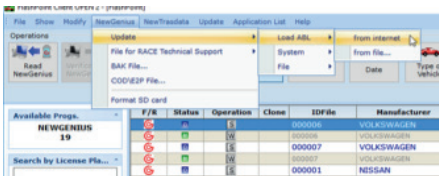
A step by step guide on how to update the Genius.



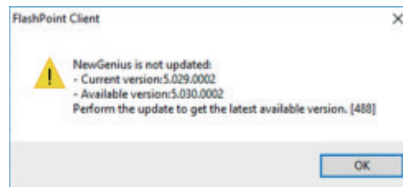
Please perform all three updates: ABL, System and Importing ECU.

1. Update ABL

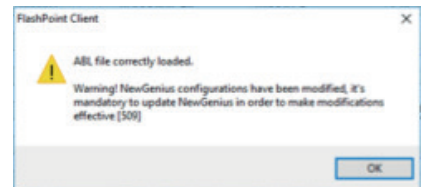
A. Follow the instructions in the picture, click on from internet



B. Click OK

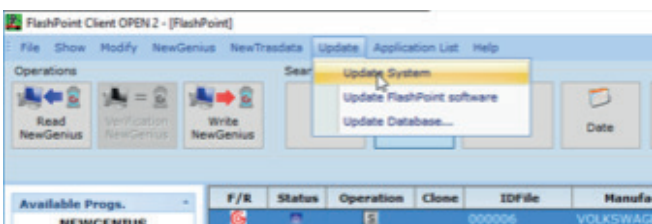


C. Click OK

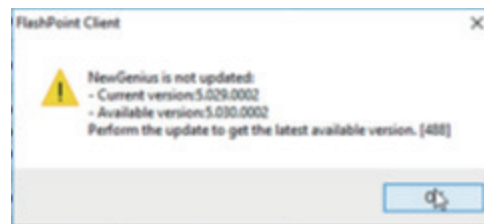


2. Update System

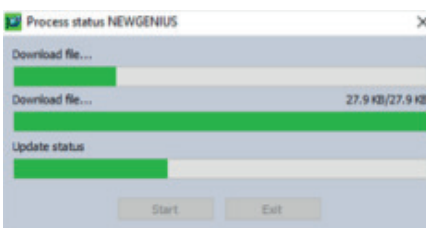
A. Follow instructions in the picture, click Update system



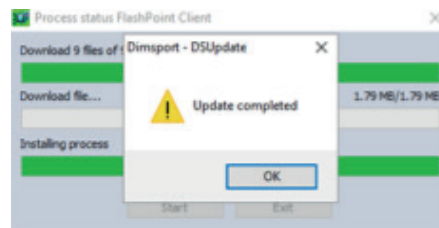
B. Click OK



C. Loading message with appear

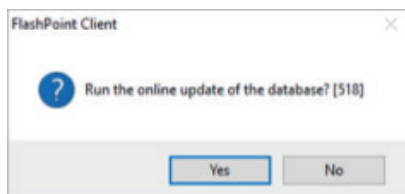


D. Click OK



3. Importing ECU

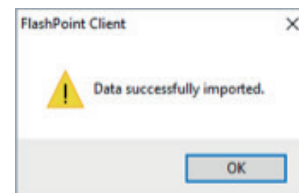
A. Open the RACEFP software, Click YES



B. There will be several loading messages, wait for them to finish



C. Click OK



How to register? (Please read payment procedure below before registering)

1. Please go to this website: <http://www.eliteremaps.com/dealer-portal>
2. Click onto register
3. Fill out the information required
4. Click register; then awaiting activation details from Elite Remaps

Payment procedure for individual files:

1. All payments are done online through the Dealer Portal
2. An email will be sent to the email address used to create the account
3. If payments are late, Elite will call the contact numbers used to create the account
4. Therefore, make sure when you create the account, you use an easy accessible email address and a company landline and/or a company mobile.
5. All invoices are sent on the 1st of the month, you'll have until the 14th to pay, on the 15th your Dealer Portal will lock so you can't do any more files until the invoice is cleared and at the end of the month, a 10% increase charge will be put onto the invoice and then each month following will also include a 10% increase until the invoice is paid.

Any payment questions regarding the procedure above, please call Elite Remaps.



An evolution of the previously released Genius.

On behalf of Dimsport, we are proud to present the New GENIUS, an evolution of the previously released Genius. The first Touch & Map tool for serial reading and programming operations of Engine Control Units (ECUs) has been improved in its technical features & performances: a new, more advanced colour touch-screen panel has been integrated and a more powerful microprocessor allows faster operations.